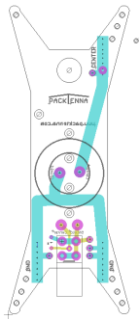


Wire #1 - EFHW 20m Wire Element

Start with raw wire total length 31' 3"

Female
banana



Ferrule

Mark 5" from end

Ferrule and
1/2" heatshrink

Finish off the end with a female banana connector
Must add 1" heatshrink over the connector and extend over the wire
Add 1/2" heatshrink on the ferrule.

1/2" Loop

1" heatshrink

Female banana socket